



Need a lift?

SuperShuttle.

Welcome 2010 American Control Conference Attendees!

Discounted Shuttle Service Available 06/22/10 through 07/12/10

Ride SuperShuttle to and from BWI, Dulles and National Airports

To receive your group's discount:

- Make your roundtrip reservation by following this link:
<https://www.supershuttle.com/default.aspx?GC=YTP8B>
- Provide the requested information, to include roundtrip service, your name, flight details (to and from the airport), and your local contact phone #.
- Select your hotel (as listed above) from the drop-down listing of hotels.
- Provide a credit card for payment.
- Print your confirmation page (or you can e-mail it to yourself).
- You may call in reservations at **1800-BLUE-VAN** (1800-258-3826) and mention code **YTP8B**

The following discounts are available to the Baltimore Marriott Waterfront hotel:

	BWI	Dulles Airport (IAD)	Reagan National (DCA)
SuperShuttle Shared Ride One Way	\$13.00 per person	\$88.00 for the first passenger, \$8.00 for each additional passenger in the same party	\$45.00 for the first passenger, \$8.00 for each additional passenger in the same party
SuperShuttle Shared Ride Round Trip (per person)	\$23.00 per person	\$175.00 for the first passenger, \$16.00 for each additional passenger in the same party	\$89.00 for the first passenger, \$16.00 for each additional passenger in the same party
ExecuCar Sedan Service (per reservation)	10% off one way and Round Trip	10% off one way and Round Trip	10% off one way and Round Trip

*pre-discounted rate applies to most downtown Baltimore hotels.

Upon arrival to the following airports:

SuperShuttle Passengers: Please get your luggage and follow signs to the SuperShuttle ticket counter near baggage and check in by name or confirmation #. The agent will assist you in boarding the next available shuttle.

ExecuCar Passengers: Your driver will be holding a sign with your name on it at baggage claim.

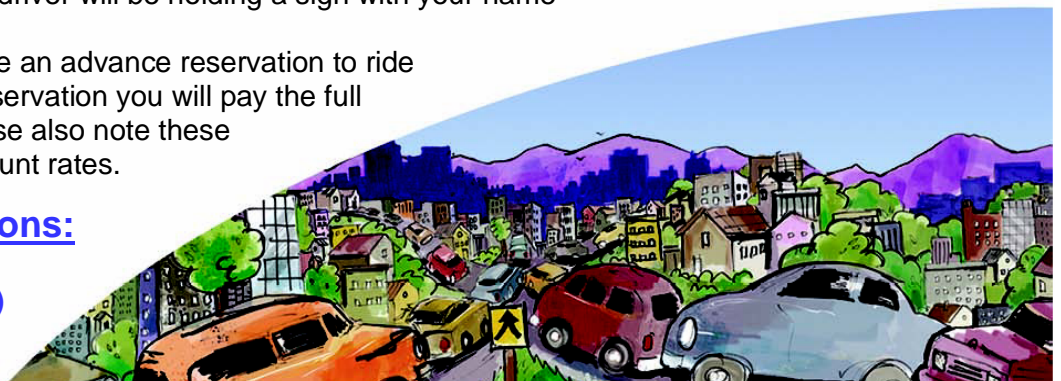
Note: You do not have to have an advance reservation to ride SuperShuttle, but without a reservation you will pay the full fare at the ticket counter. Please also note these are non-commissionable discount rates.

SuperShuttle Reservations:

www.SuperShuttle.com

1 800 BLUE VAN (258-3826)

Mention Code: YTP8B



*Fares subject to change without notice. Depending on the current price of fuel there may be a fuel surcharge in place. Go to www.SuperShuttle.com for the most current pricing. Discount is valid for reservations made on the website or by phone, prepaid by credit card, travel June 22, 2010- July 12, 2010 to/from most downtown Baltimore Hotels and BWI/DCA/IAD airports. If the link doesn't work go to www.SuperShuttle.com and use discount code **YTP8B** for your discounts. If you have any questions about this discount please call SuperShuttle Sales at 410-859-2304 during business hours.